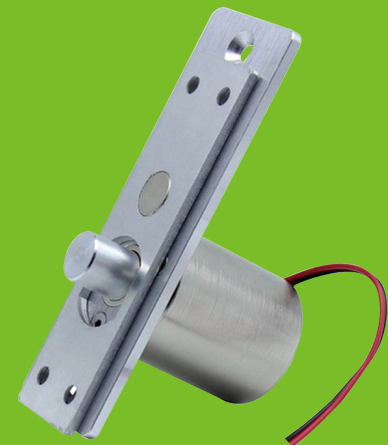


DC12V Waterproof Mortise Bolt Lock



BL-T10

Specifications

Voltage	DC12V
Current	Start state 1.1A continuous state 0.09A
Security type	lock when power on, unlock when power off
Locking method	Magnetic induction. Locking
Lock core size	lock core diameter 12mm, extension length 13mm

Dimensions(mm)

